



# SMITH'S WOOD

## A CADEMY



PROSPECTUS  
2024-25

PART OF THE FAIRFAX MULTI-ACADEMY TRUST



# Welcome from the CEO



Mr Simon Jones | CEO

We are delighted that you are considering sending your child to Smith's Wood Academy. Smith's Wood is one of a family of four academies that form the Fairfax Multi-Academy Trust (FMAT).

Established in 2014, FMAT is an educational charity, which encourages its academies to celebrate their own uniqueness, whilst sharing one mission, vision and set of values.

Our mission is "Enriching Lives; Transforming Futures". We achieve this by ensuring all of our students access a broad and wide-ranging curriculum, while being supported in a structured, kind and caring environment.

Our family is a values-led organisation. The following five values underpin all of the work we do:

**Excellence** - We strive for the highest quality to ensure excellent outcomes and personal achievements.

**Dedication** - We believe there is dignity in hard work and effort.

**Ambition** - We aim to be the best that we can be, in all that we do.

**Integrity** - We believe in openness, honesty and have a real sense of moral purpose.

**Tradition** - We believe in good manners, kindness and respect.

OUR

Our vision is that every child within the Trust, regardless of their background, will attend an Academy that offers a high-quality education.

What do we mean by 'high-quality of education'?

Every child is recognised as an individual and has access to first-class pastoral care because we want your child to be happy;

Every child benefits from a wide range of enriching opportunities because we place great emphasis on your child's personal development;

Every child benefits from dedicated leaders, teachers and staff who are relentless in their ambition to improve the quality of teaching in our academies because we know excellent teaching is key to transforming the futures of our students.

OUR VISION

# Welcome from the Principal

---



Mr Stephen Huntington  
Principal

We're incredibly proud to welcome you to Smith's Wood Academy which is a special place to learn and work. Students that choose to study with us and colleagues that choose to work with us tell us what an incredible school this is.

At Smith's Wood we do things the Smith's Wood Way. This means that we strive for excellence in all that we do; we are dedicated and ambitious for ourselves and each other. We truly believe that there is dignity in hard work and effort and we believe in taking a traditional approach – manners, courtesy and respect are integral to our work. We believe in being open and transparent and in working with absolute integrity. I am proud to say that this is a school where staff and students support each other and take collective responsibility.

Our aim is to prepare each and every student to succeed in the next stages of their career, education and training and to have the skills and competencies to do this. Smith's Wood's traditional curriculum and traditional approach to teaching and learning underpins our ethos and our drive to mastering the basics; reading, writing, communicating and mathematics.

As the leaders of this school, we are incredibly proud of our Academy and its community. Equally proud are our staff and students.

We are relentless in our drive and ambition to improve the outcomes for all who choose to join us on our journey. We hope that you like what you read and that you choose to take the first steps in joining the Smith's Wood Team.



*"At Smith's Wood we do things the Smith's Wood Way. We are a unique school whose ethos is very much built upon traditional values."*



## Welcome to Smith's Wood

---

Smith's Wood Academy is located in the north of Solihull. There are approximately 1100 students on roll. The Academy is in a strong position in that it is the school of choice for the local community and has been so for a number of years.

Smith's Wood converted to an academy on the 1st April 2017, working in partnership with the Fairfax Multi-Academy Trust (FMAT) – already this partnership is highly effective in bringing about real and sustainable changes to the school and its community. The newly established leadership team is making important and rapid gains in terms of school improvement.

The potential opportunities that will be afforded to our children, staff and the local community will be second to none as this partnership continues to grow and develop.

People that know us, are clear that we have an unrivalled commitment to inclusion. We demonstrate, in all that we do, our belief in the importance of providing tailored support for young people and their families – our pastoral care and guidance is a real strength of our school.



Education is the most powerful  
weapon which you can use to  
change the world.

*Nelson Mandela*



## Learning and Curriculum

---

Our aim is to develop both staff and students to ensure all students excel in lessons and achieve the highest outcomes.

As a school we have adopted the Teaching for Excellence model to the curriculum delivery. The curriculum for every department is knowledge rich and emphasises the development and securing deep knowledge prior to the development of skills. Teachers plan learning around carefully designed Learning Journeys and our curriculum is designed to provide a flexible, personalised education - knowing that one size does not fit all and preparing students for their future lives.

The Teaching for Excellence Model, is based on 6 key principles;

- Explanation
- Deliberate practice
- Modelling
- Questioning
- High quality feedback (in the lesson)
- High expectations

Smith's Wood aims to support every member of staff in becoming an outstanding teacher. A varied professional development programme is provided that caters for teachers at all stages in their career; teachers are encouraged to share their ideas and learn from each other. Our Coaching Programme has been well received by staff and is highly effective in terms of developing teaching and learning.

A good education is the  
foundation to a better future.

*Elizabeth Warren*





## Safeguarding

---

Smith's Wood Academy is committed to the highest standards, prioritising above all else the protection of the children entrusted to our care.

### **What will we do if we have a concern about your child?**

If we are concerned that your child may be at risk of abuse or neglect we must follow the procedures in our Safeguarding and Child Protection Policy. A copy of this can be found on our web site.

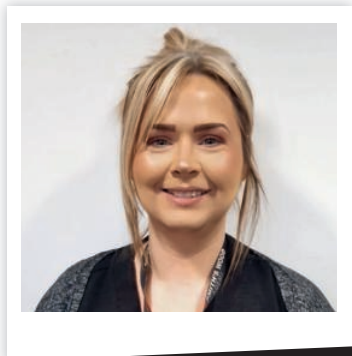
The procedures have been written to protect all students; they comply with our statutory responsibilities and are designed to support students, families and staff. The procedures are based on the principle that the welfare of the child is the most important consideration.

In almost all circumstances, we will speak to you about our concerns as well as inform you if we feel we must refer our concerns to the Children's Social Care Team. We will request your consent to put forward a referral, but in some circumstances we may need to make

the referral against your wishes. We will only do this if we genuinely believe that this is the best way to protect your child, and it will be recorded that you did not provide consent for the referral. If we determine that contacting you in the first instance may jeopardize the situation, we will report our concerns to the Children's Social Care Team and await further advice. We will normally tell you that a referral is being made and will record the reasons why we decided to follow this course of action.

All child protection records are kept securely and filed separately from your child's general school file. The only staff that have access to these records are those who need to be informed about the concerns in order to protect and support your child.

Child protection is an extremely sensitive issue; it raises many questions and a range of strong emotions. We will ensure we do everything we possibly can to support our students and would like to assure you that any action taken will be in the best interests of your child.



The senior DSL (Designated Safeguarding Lead)  
at Smith's Wood is Mrs Katie Tucker

Safeguarding Team by email, please send them to:

**[safeguarding@smithswood.fmat.co.uk](mailto:safeguarding@smithswood.fmat.co.uk)**

You can also contact Safeguarding staff by calling the number below and following the recorded options:

**0121 788 4100**

Students are encouraged to develop a culture of 'tell someone'. All Academy staff are trained to recognise and respond to reports of abuse or neglect'.



## The House System

Our main focus is that all students enjoy their time whilst at Smith's Wood Academy. As a school we offer a variety of opportunities to all students to participate in away from their typical academic lessons.

The House system supports to embody the values and ethos of the school through a community experience for all parties.

When starting at Smith's Wood Academy, students are placed in one of four Houses, Hawking, Luther-King, Pankhurst or Parks. Being part of a House and participating in House events allows students to experience the Academies Core Values; Excellence, Dedication Integrity, Ambition, Tradition through the use of sports, creative arts, academic and charity competitions.



Better together; no one left behind.



## Our commitment to student welfare

---

The pastoral care and support for our students is a priority for the Academy. We have a strong pastoral support network to ensure that no child is forgotten and that their pastoral needs are effectively met.

Each student is placed into one of four houses; Parks, Pankhurst, Hawkins and Luther-King. Healthy competition is promoted between house teams, particularly in sport, creative and performing arts.

Each year group is led by the relevant year group Achievement Leader and Deputy Achievement Leader. These colleagues promote academic achievement through high quality pastoral support.

This support network also includes;

- An SEND team comprising a SENDCo, Inclusion Manager and a team of Teaching Assistants;

- A Designated Safeguarding Lead (DSL)
- A school Healthcare Administrator ;
- Attendance Team;

Standards of discipline and uniform are high at Smith's Wood Academy. Our students know what good behavior is and they demonstrate this in all that they do.

We expect all students to behave well and to demonstrate good manners and respect. We will not allow any lesson to be interrupted by poor behaviour.

“ We have created a culture where teachers can teach and students can learn.

## The Smith's Wood Offer

Every student that attends Smith's Wood Academy will be aware of their entitlement outside the classroom and what their cultural pathway will be whilst on their school journey. This will culminate in Y11 with a successful completion of their passport allowing them to graduate, prepared for their adult life.

Some of the experiences offered to students over the last 12 months include Highly Sprung, Ackers Adventure and Climate Awareness week.



AMBITION · RESILIENT · RESPECTFUL · AND · RESPECT

## What our students say

---

“At Smith’s Wood, the teachers treat us like young adults and they respect us; there is no them and us, in our school it is ‘we’.” *Bailey, Year 9*

“We are given excellent opportunities to take part in trips and visits that help us with our learning and also help us to express ourselves.”

*Oliver, Year 10*

“I feel safe and happy at Smith’s Wood.”

*Lily, Year 7*

“Here at Smith’s Wood we are treated not as numbers on a spreadsheet but as young adults, we feel valued and given the confidence that we can make an impact in the world.” *Koby, Year 10*

“Teachers help me to understand the work and make sure I do my best.”

*James, Year 8*







## Our facilities

---

We are incredibly fortunate that our Academy was built as part of the 'Building Schools for the Future' initiative. The Academy enjoys first class educational facilities that are well-maintained and conducive to exciting and successful learning opportunities. Staff and students enjoy;

- Excellent sports facilities – gym, sports hall, climbing wall, swimming pool, multi-use games area (MUGA), all-weather sports pitch and a fitness suite;
- A suite of fully equipped science laboratories and specialist ICT, art and design and technology areas;
- Drama studios, music suites and recording studios;
- Two Learning Resource Centres.

- The school benefits from a large outdoor space which is well-maintained. Students benefit from a canopied area, seating areas and outdoor table-tennis facilities for use at social times.
- Each teacher is allocated a teaching base that is well equipped and designed to maximize learning. Each classroom has a teacher workstation with a visualiser to support teaching and learning.
- An extensive programme of re-decoration, refurbishment and maintenance ensures that our environment is one in which people want to work.

Our facilities may be enviable but we are very clear that it is, of course, the people and the ethos rather than the building that make for a thriving school.



ENRICHING **LIVES;** TRANSFORMING FUTURES

**EXCELLENCE.**  
**DEDICATION.**  
**AMBITION.**  
**INTEGRITY.**  
**TRADITION.**