



SMITH'S WOOD ACADEMY

PROSPECTUS 2021-22

Better together; no one left behind.

PART OF THE FAIRFAX MULTI-ACADEMY TRUST



WELCOME FROM THE CEO



Mr Simon Jones | CEO

We are delighted that you are considering sending your child to Smith's Wood Academy. Smith's Wood is one of a family of four academies that form the Fairfax Multi-Academy Trust (FMAT).

Established in 2014, FMAT is an educational charity, which encourages its academies to celebrate their own uniqueness, whilst sharing one mission, vision and set of values.

Our mission is "Enriching Lives; Transforming Futures". We achieve this by ensuring all of our students access a broad and wide-ranging curriculum, while being supported in a structured, kind and caring environment.

Our family is a values-led organisation. The following five values underpin all of the work we do:

Excellence - We strive for the highest quality to ensure excellent outcomes and personal achievements.

Dedication - We believe there is dignity in hard work and effort.

Ambition - We aim to be the best that we can be, in all that we do.

Integrity - We believe in openness, honesty and have a real sense of moral purpose.

Tradition - We believe in good manners, kindness and respect.

OUR VALUES

Our vision is that every child within the Trust, Our vision is that every child within the Trust, regardless of their background, will attend an Academy that offers a high-quality education.

What do we mean by 'high-quality of education'?

- Every child is recognised as an individual and has access to first-class pastoral care because we want your child to be happy;
- Every child benefits from a wide range of enriching opportunities because we place great emphasis on your child's personal development;
- Every child benefits from dedicated leaders, teachers and staff who are relentless in their ambition to improve the quality of teaching in our academies because we know excellent teaching is key to transforming the futures of our students.

OUR VISION

ENRICHING **LIVES;** TRANSFORMING **FUTURES**

WELCOME TO SMITH'S WOOD
MR RICHARD CORNELL | ACTING HEAD OF ACADEMY



Smith's Wood Academy is a special place to learn and work. Students that choose to study with us and colleagues that choose to work with us tell us what an incredible school this is.

At Smith's Wood we do things the Smith's Wood Way. This means that we strive for excellence in all that we do; we are dedicated and ambitious for ourselves and each other. We truly believe that there is dignity in hard work and effort and we believe in taking a traditional approach – manners, courtesy and respect are integral to our work. We believe in being open and transparent and in working with absolute integrity. I am proud to say that this is a school where staff and students support each other and take collective responsibility.

Our aim is to prepare each and every student to succeed in the next stages of their career, education

and training and to have the skills and competencies to do this. Smith's Wood's traditional curriculum and traditional approach to teaching and learning underpins our ethos and our drive to mastering the basics; reading, writing, communicating and mathematics.

As Head of Academy, I am incredibly proud of our Academy and its community. Equally proud are our staff and students.

I am relentless in my drive and ambition to improve the outcomes for all who choose to join us on our journey. I hope that you like what you read and that you choose to take the first steps in joining the Smith's Wood Team.

MR R CORNELL
Acting Head of Smith's Wood Academy

"At Smith's Wood we do things the Smith's Wood Way. We are a unique school whose ethos is very much built upon traditional values."



WELCOME TO SMITH'S WOOD

ABOUT SMITH'S WOOD

Smith's Wood Academy is located in the north of Solihull. There are approximately 1100 students on roll. The Academy is in a strong position in that it is the school of choice for the local community and has been so for a number of years.

Smith's Wood converted to an academy on the 1st April 2017, working in partnership with the Fairfax Multi-Academy Trust (FMAT) – already this partnership is highly effective in bringing about real and sustainable changes to the school and its community. The newly established leadership team is making important and rapid gains in terms of school improvement.

The potential opportunities that will be afforded to our children, staff and the local community will be second to none as this partnership continues to grow and develop.

People that know us, are clear that we have an unrivalled commitment to inclusion. We demonstrate, in all that we do, our belief in the importance of providing tailored support for young people and their families – our pastoral care and guidance is a real strength of our school.



**Education is the most
powerful weapon which
you can use to change
the world .**

Nelson Mandela



WELCOME TO SMITH'S WOOD LEARNING AND CURRICULUM

Our aim is to develop both staff and students to ensure all students excel in lessons and achieve the highest outcomes.

As a school we have adopted the mastery approach to the curriculum and to curriculum delivery. The curriculum for every department is knowledge rich and emphasises the development and securing deep knowledge prior to the development of skills. Teachers and students alike, plan learning around carefully compiled Knowledge Organisers. Our curriculum is designed to provide a flexible, personalised education - knowing that one size does not fit all and preparing students for their future lives.

The Mastery or Teaching for Excellence Model, is based on 6 key principles;

- Explanation
- Deliberate practice
- Modelling
- Questioning
- High quality feedback (in the lesson)
- High expectations

Smith's Wood aims to support every member of staff in becoming an outstanding teacher. A varied professional development programme is provided that caters for teachers at all stages in their career; teachers are encouraged to share their ideas and learn from each other. Our Coaching Programme has been well received by staff and is highly effective in terms of developing teaching and learning.



“
A good education is the
foundation to a better future.
Elizabeth Warren

WELCOME TO SMITH'S WOOD TEACHING & LEARNING VISION

At Smith's Wood Academy, we believe all students, whatever their background, are able to become experts in the disciplines that they study. Their expertise will be achieved through quality teaching and the dissemination of deep knowledge by highly skilled and knowledgeable subject experts. The Mastery approach to teaching will prevail – in every classroom, every lesson, every day.

Our students have the right to be introduced to deep knowledge and a wealth of information from the spectrum of subjects that they study. They will be introduced to, and understand, theories and principles that have influenced, continue to influence, and will influence in the future, the world in which they live. They will be prepared to fully engage in academic discussion about their learning.

This learning will secure a successful place in society for our students. They will go further than they ever thought possible.

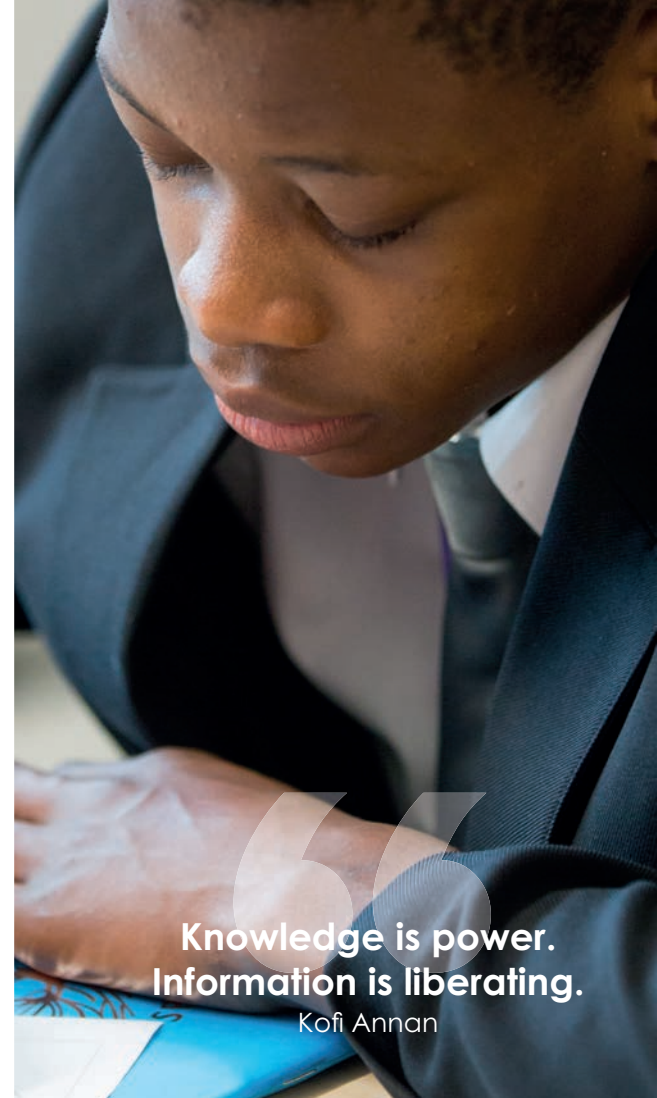
Our students are seeds of the future, it is therefore imperative that we nurture them through every step of their growth, to water them with knowledge and to provide a robust framework that enables them to grow in a way that is best for them until they have the strongest of foundations, a thirst for learning and to develop personally as well as academically.

At Smiths Wood Academy we seek to develop our students to become experts in the subjects that they undertake. We do this by ensuring that our teachers are ambassadors of excellence in their subjects and thus able to impart detailed and in-depth knowledge, in line with a comprehensive curriculum. We select the best teaching staff to develop the best students. Teachers teach with passion and striving for only the highest of standards. To offer all that we do, we ensure that our teaching staff are invested in and are developed to exacting standards not just to meet our expectations but to exceed them.

Our approach ensures that students are given regular feedback on their progress and given the chance to develop and improve. This subsequently makes them reflective learners, ensuring that they identify their own areas of development, yet in a guided fashion.

This in turn makes them more resilient and underpins their learning in class. Furthermore, this instils personal development and discipline that is encouraged through an environment created for them to develop, not just academically, but as young adults too.

We create an atmosphere conducive to learning and the students will follow a centrally set system for homework which embeds and consolidates their taught curriculum. Students are taught that learning is a continual process, and that independent learning contributes to successful outcomes. For our students, a better today leads to a brighter tomorrow.



**Knowledge is power.
Information is liberating.**

Kofi Annan

WELCOME TO SMITH'S WOOD SAFEGUARDING

Smith's Wood Academy is committed to the highest standards, prioritising above all else the protection of the children entrusted to our care.

What will we do if we have a concern about your child?

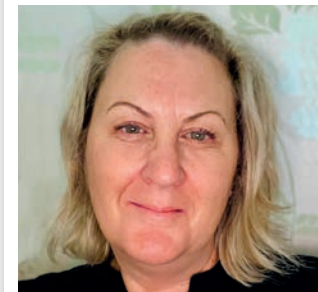
If we are concerned that your child may be at risk of abuse or neglect we must follow the procedures in our Safeguarding and Child Protection Policy. A copy of this can be found on our web site.

The procedures have been written to protect all students; they comply with our statutory responsibilities and are designed to support students, families and staff. The procedures are based on the principle that the welfare of the child is the most important consideration.

In almost all circumstances, we will speak to you about our concerns as well as inform you if we feel we must refer our concerns to the Children's Social Care Team. We will request your consent to put forward a referral, but in some circumstances we may need to make the referral against your wishes. We will only do this if we genuinely believe that this is the best way to protect your child, and it will be recorded that you did not provide consent for the referral. If we determine that contacting you in the first instance may jeopardize the situation, we will report our concerns to the Children's Social Care Team and await further advice. We will normally tell you that a referral is being made and will record the reasons why we decided to follow this course of action.

All child protection records are kept securely and filed separately from your child's general school file. The only staff that have access to these records are those who need to be informed about the concerns in order to protect and support your child.

Child protection is an extremely sensitive issue; it raises many questions and a range of strong emotions. We will ensure we do everything we possibly can to support our students and would like to assure you that any action taken will be in the best interests of your child.



The senior DSL (Designated Safeguarding Lead)
at Smith's Wood is Mrs Phillippa Brookes

Safeguarding Team by email, please send them to:

safeguarding@smithswood.fmat.co.uk

You can also contact Safeguarding staff by calling the number below and following the recorded options:

0121 788 4100

Students are encouraged to develop a culture of 'tell someone'. All Academy staff are trained to recognise and respond to reports of abuse or neglect'.

WELCOME TO SMITH'S WOOD THE HOUSE SYSTEM

Our main focus is that all students enjoy their time whilst at Smith's Wood Academy. As a school we offer a variety of opportunities to all students to participate in away from their typical academic lessons.

The House system supports to embody the values and ethos of the school through a community experience for all parties.

When starting at Smith's Wood Academy, students are placed in one of four Houses, Hawking, Luther-King, Pankhurst or Parks. Being part of a House and participating in House events allows students to experience the Academies Core Values; Excellence, Dedication Integrity, Ambition, Tradition through the use of sports, creative arts, academic and charity competitions.



Better together; no one left behind.

WELCOME TO SMITH'S WOOD | THE HOUSE SYSTEM - PARTICIPATION LEADERS

PURPOSE

The House System is designed to embody the values and ethos of the school and aims to be an integral part of our school community; it promotes healthy competition and fosters community spirit.

MRS GIBSON | HEAD OF HAWKING HOUSE

Welcome to Hawking House! We cannot wait to have you as part of our fantastic team, our house is the BEST!(sshhhh don't tell the other houses) we always try our best to occupy the top spot! We will need your help to secure that top spot in next year's competitions. The house system is a great way to meet new people, get involved with a range of different sporting and creative art activities throughout the year. We are a competitive house, but for the right reasons – We are a TEAM! Take part, have fun, and meet new people. Whether you like to sing, run, dance, swim, cook, draw or any other hobbies I can assure you that there will be competitions for you to take part in and help Hawking House be on top!



MISS BARTLETT | HEAD OF PARKS HOUSE

Welcome to Parks House! We have had a very successful first year with high participation across all year groups. Parks students are committed, enthusiastic and competitive but above all else are willing to give anything a go!

There are competitions for all students in the house whether academic or creative. I'm keen to encourage you to have a go.

HOW TO EARN HOUSE POINTS

Throughout the year there will be many house competitions and events. Students are able to obtain a house point when they represent their house at each competition or event they participate in.



MISS HOWE | HEAD OF PANKHURST HOUSE

Welcome to Pankhurst house. We are named after the inspirational Emily Pankhurst who bravely stood up for what she believed in, therefore we like to abide by her motto: 'Deeds not words'. Pankhurst is one big family; we are all in it together. The Pankhurst family take part in house competitions throughout the year, ranging from sporting events to creative activities- there is something for everyone and we encourage every student to get involved. Our house colour is yellow, the colour of happiness and optimism. It inspires thought and curiosity, boosts enthusiasm and confidence; all qualities we hope to instil in our students.



MISS WILSON | HEAD OF LUTHER-KING HOUSE

Welcome to Luther King House! Our house is proudly named after an inspirational, hard-working and determined man – Martin Luther King, Jr. In this house, we believe that if we work as a team, we will succeed! We will need your participation in a wide range of house events - whether it's sports or creative arts, there is something for everyone. I hope that you will wear your house colours with pride, and represent your house to the best of your ability, just like I know you can! We strive to participate in every event and support each other to do our very best, so that we can achieve anything we set our minds to.



WELCOME TO SMITH'S WOOD OUR COMMITMENT TO STUDENT WELFARE

The pastoral care and support for our students is a priority for the Academy. We have a strong pastoral support network to ensure that no child is forgotten and that their pastoral needs are effectively met.

Each student is placed into one of 4 houses; Ash, Elm, Bay or Yew House. Healthy competition is promoted between house teams, particularly in sport, creative and performing arts.

Each year group is led by the relevant year group Excellence Leader and Deputy Excellence Leader. These colleagues promote academic achievement through high quality pastoral support.

This support network also includes;

- An SEND team comprising a SENDCo, Inclusion Manager and a team of Teaching Assistants;

- A non-teaching Designated Safeguarding Lead (DSL)
- A school Medical Advisor (specialising in mental health);
- A Child and Family Support Worker;
- Attendance Manager;

Standards of discipline and uniform are high at Smith's Wood Academy. Our students know what good behavior is and they demonstrate this in all that they do.

We expect all students to behave well and to demonstrate good manners and respect. We will not allow any lesson to be interrupted by poor behaviour.





WELCOME TO SMITH'S WOOD OUR FACILITIES

We are incredibly fortunate that our Academy was built as part of the 'Building Schools for the Future' initiative. The Academy enjoys first class educational facilities that are well-maintained and conducive to exciting and successful learning opportunities. Staff and students enjoy;

- Excellent sports facilities – gym, sports hall, climbing wall, swimming pool, multi-use games area (MUGA), all-weather sports pitch and a fitness suite;
- A suite of fully equipped science laboratories and specialist ICT, art and design and technology areas;
- Drama studios, music suites and recording studios;
- Two Learning Resource Centres.

- The school benefits from a large outdoor space which is well-maintained. Students benefit from a canopied area, seating areas and outdoor table-tennis facilities for use at social times.
- Each teacher is allocated a teaching base that is well equipped and designed to maximize learning. Each classroom has a teacher workstation with a visualiser to support teaching and learning.
- An extensive programme of re-decoration, refurbishment and maintenance ensures that our environment is one in which people want to work.

Our facilities may be enviable but we are very clear that it is, of course, the people and the ethos rather than the building that make for a thriving school.

WELCOME TO SMITH'S WOOD

WHAT OUR STUDENTS SAY

"I feel safe and happy at Smith's Wood".

Lily, Year 7

"Teachers help me to understand the work and make sure I do my best".

James, Year 8

"At Smith's Wood, the teachers treat us like young adults and they respect us; there is no them and us, in our school it is 'we'".

Bailey, Year 9

"Here at Smith's Wood we are treated not as numbers on a spreadsheet but as young adults, we feel valued and given the confidence that we can make an impact in the world."

Koby, Year 10

"We are given excellent opportunities to take part in trips and visits that help us with our learning and also help us to express ourselves.'".

Oliver, Year 10

